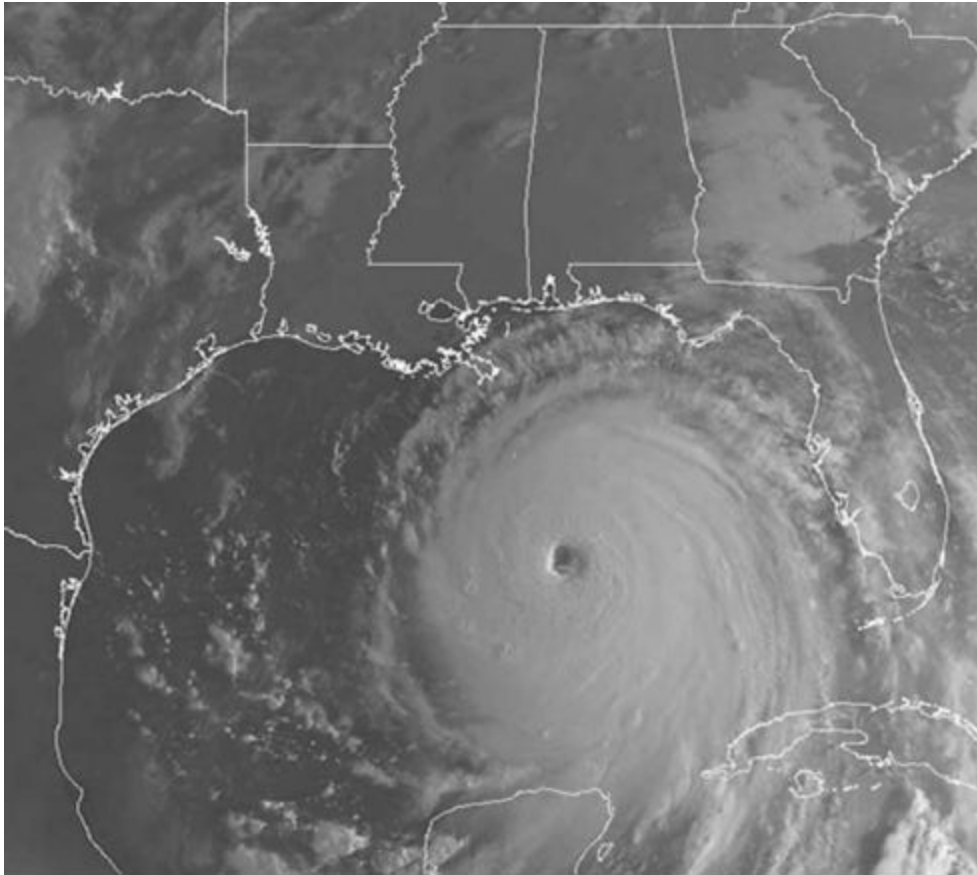


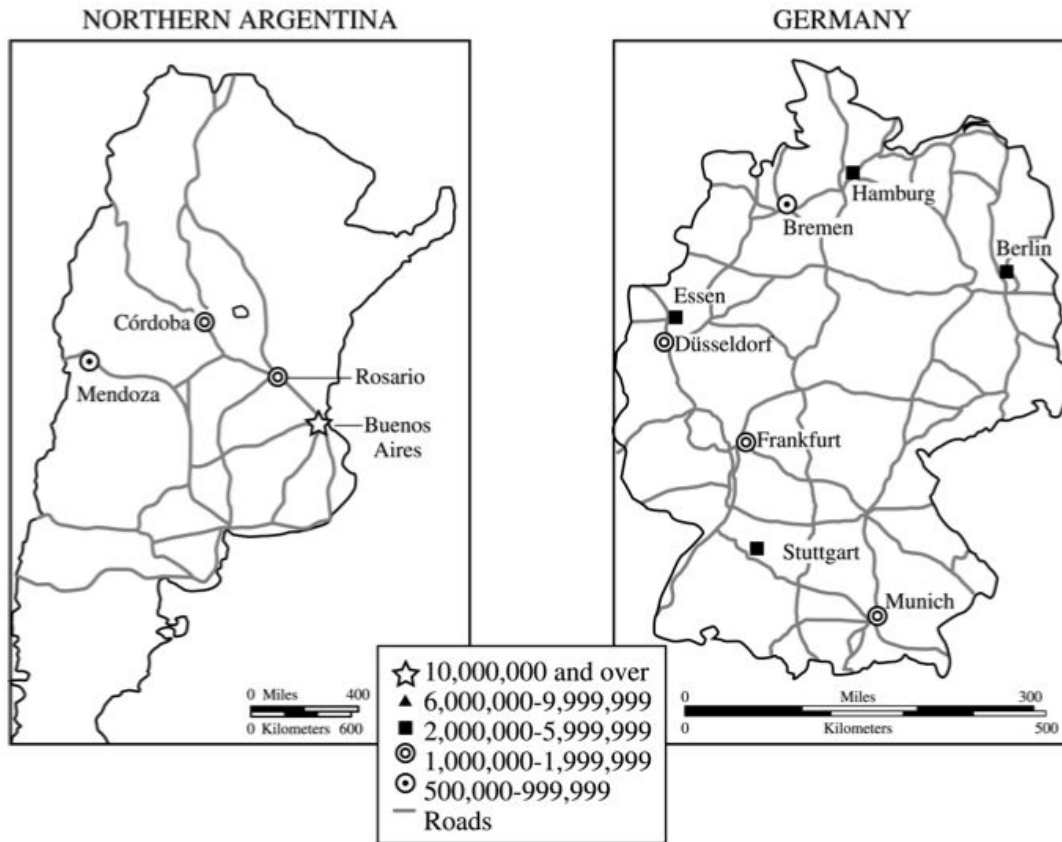
2017 United States Geography Olympiad - Map Skills Examination [SAMPLE]

Section 1



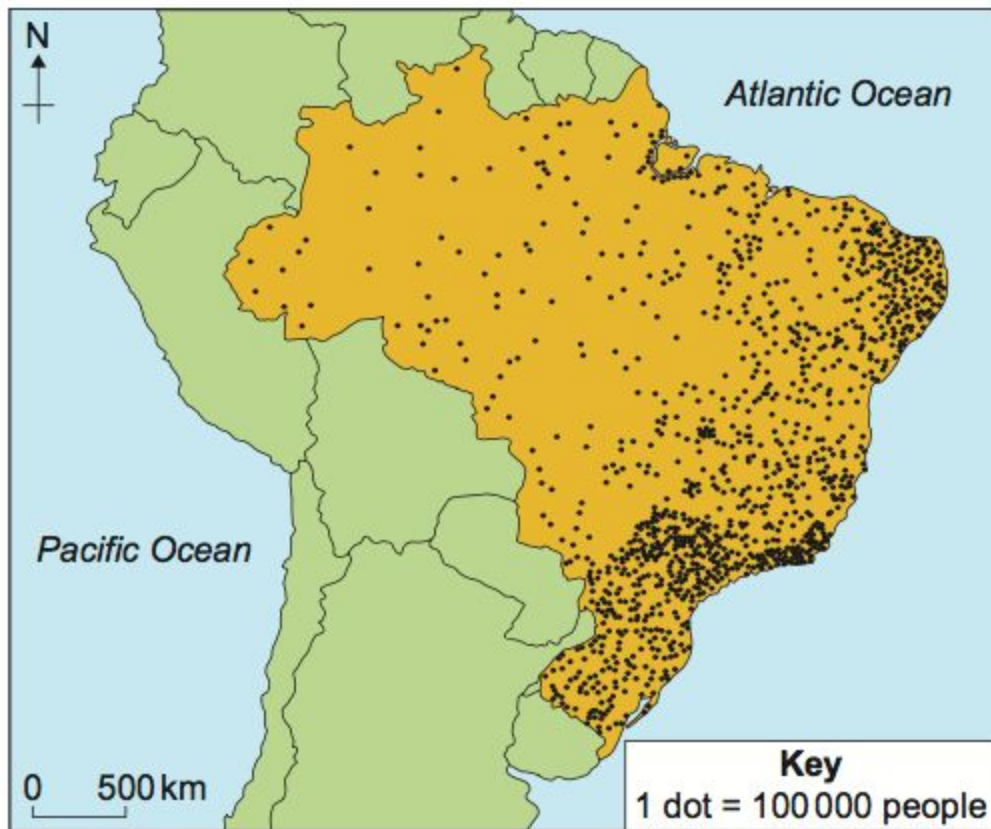
1. Clearly label each of the following - eye, eyewall, feeder bands. In addition, clearly indicate the area of the storm that would be expected to have the highest winds and the direction of rotation of the storm.
2. What are the approximate coordinates of the eye of the storm?
3. Given the location of the storm, indicate on the map the most likely area [approximately $\frac{1}{2}$ inch] for the storm to make landfall.

Section 2



1. Identify and briefly explain three reasons why the core-periphery model helps to explain the systems illustrated in the maps above. Use evidence from both maps in your response.

Section 3



Population distribution of Brazil

1. With reference to the map above, account for the distribution of population in Brazil.
2. Identify and briefly explain two reasons why a dot map is not the best or most accurate way to display this data.